



VIKING S30



Liferafts with Extended Service Intervals

VIKING S30



Over 10,000 units delivered

Like other liferafts with extended service intervals, VIKING S30 liferafts are davit-launched or throw-overboard, inflatable liferafts with an extended service interval of up to 30 months instead of the usual 12 months. For extra protection during this period, they're securely packed in a hermetically sealed membrane that resists the migration of water vapour.

But that's where the comparison stops. Thanks to their unique quality and features, more than 10,000 VIKING S30s have been installed around the world since 2000. It's a powerful testament to their design - and to VIKING's commitment to making a full range of choices available.

5 reasons why we're the no.1 choice for liferafts with extended service intervals

1

No power or computer needed

Annual onboard testing takes just 3 simple steps - a feature unique to the VIKING S30 liferaft. What could be more simple?



2

Everything's included

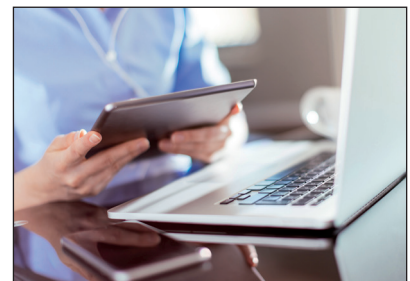
When you purchase a VIKING S30, you get a full package including a container with a testing window, testing tools and access to an online portal.



3

Online support makes it even easier

The VIKING S30 online portal provides everything you need to train for and register annual on-board inspections. And it's simple to learn to use, too.



4

Backed by the most efficient service network on earth

VIKING service stations around the globe are equipped and certified to service the VIKING S30 - and they're supported by state of the art booking system and stock locations worldwide.



5

Optional world-class service agreements

We can help you determine the right mix of standard or extended service interval liferafts to optimize servicing efficiency and reduce costs. With a Shipowner Agreement you can have both liferaft types - and vary the ratio as needed.



VIKING S30



VIKING S30 liferafts feature an extra window at the end of the container to make visual onboard inspection possible.

Packed with features

Flexible choices

VIKING S30 liferafts come in a variety of sizes, with self-righting, throw-overboard and davit-launchable versions available. They're stowed in rigid fibreglass containers, which are the same across the range, enabling the same racks, ramps and instruction materials to be used.

Deployment procedures are the same for standard liferafts and those with extended service intervals..

VIKING S30 liferafts are approved by DNV to SOLAS/MED requirements and relevant flag state approvals.



A special briefcase is included with every VIKING S30 liferaft, containing an instruction manual, testing tool, log book, special flashlight, and the login and password to the VIKING S30 online service portal.

The case is stored on board to record completed service tasks and provide instant documentation for inspections.

Onboard servicing by crew in 3 simple steps

No power or computer required!

Just 3 easy steps is all it takes for the crew to perform annual onboard inspections.



1 Register date and serial number in log book



2 Insert testing tool and hold for 5 seconds



3 Record result in log book. Done!

VIKING S30s are serviced using a combination of annual onboard inspections carried out by crew and specialized service after 30 months at a VIKING certified service station.

At 30 months the liferaft must be serviced at a VIKING S30 certified servicing station. A current list is available in the VIKING S30 online portal or from your local VIKING office.

We've done our best to make it even easier for you, too:

- Our VIKING S30 online portal contains everything there is to know for servicing tasks.
- Your crew achieve certification via online e-learning programs and reporting.
- Instructions, troubleshooting and reporting are all in one place and accessible at any location with an internet connection.

Outsource your safety compliance - with full flexibility

A VIKING Shipowner Agreement offers everything you need to say goodbye to the complexity and hassles of safety compliance forever. It's a uniquely customizable concept that covers almost all products and brands in a variety of predictable, fixed-price structures from a single point of contact. And it can cover both standard and VIKING S30 liferafts, too, even enabling you to change the ratio as your needs evolve!

Start with an all-encompassing contract or simply add vessels and safety products as needed. And remember - only a VIKING Shipowner Agreement ensures you know exactly:

- What you get
- How much it will cost
- How you can change your contract underway



What exactly is an 'extended service interval' liferaft?

Extended service interval liferafts are permitted under SOLAS regulation 20.8.3, which enables liferafts to be inspected at longer intervals than 12 months, as long as the same safety levels are met as for conventional liferafts.

Less handling

The liferafts must be annually tested on board by trained and certified personnel, but require less handling than conventional products. So they carry lower associated costs (such as barge, overtime and transportation) than standard liferafts.

More planning

Service dates are based on the date of manufacture, and extension are not allowed – or grace periods for dated items. Extended service interval liferafts can only be serviced at specially equipped, certified service stations.

Similar costs

Experience shows that in the long run, higher costs of specialised services and the need to carry out replacement at certified servicing stations result in a similar overall cost level between extended service interval and standard liferafts.



Important to know about rules and regulations

The VIKING S30 liferafts are approved according to SOLAS and HSC codes. Onboard testing is covered by IMO resolution MSC.1/Circ.1328 of 11 June 2009, Guidelines for the approval of inflatable liferafts subject to extended service intervals not exceeding 30 months.

No possibility for extensions

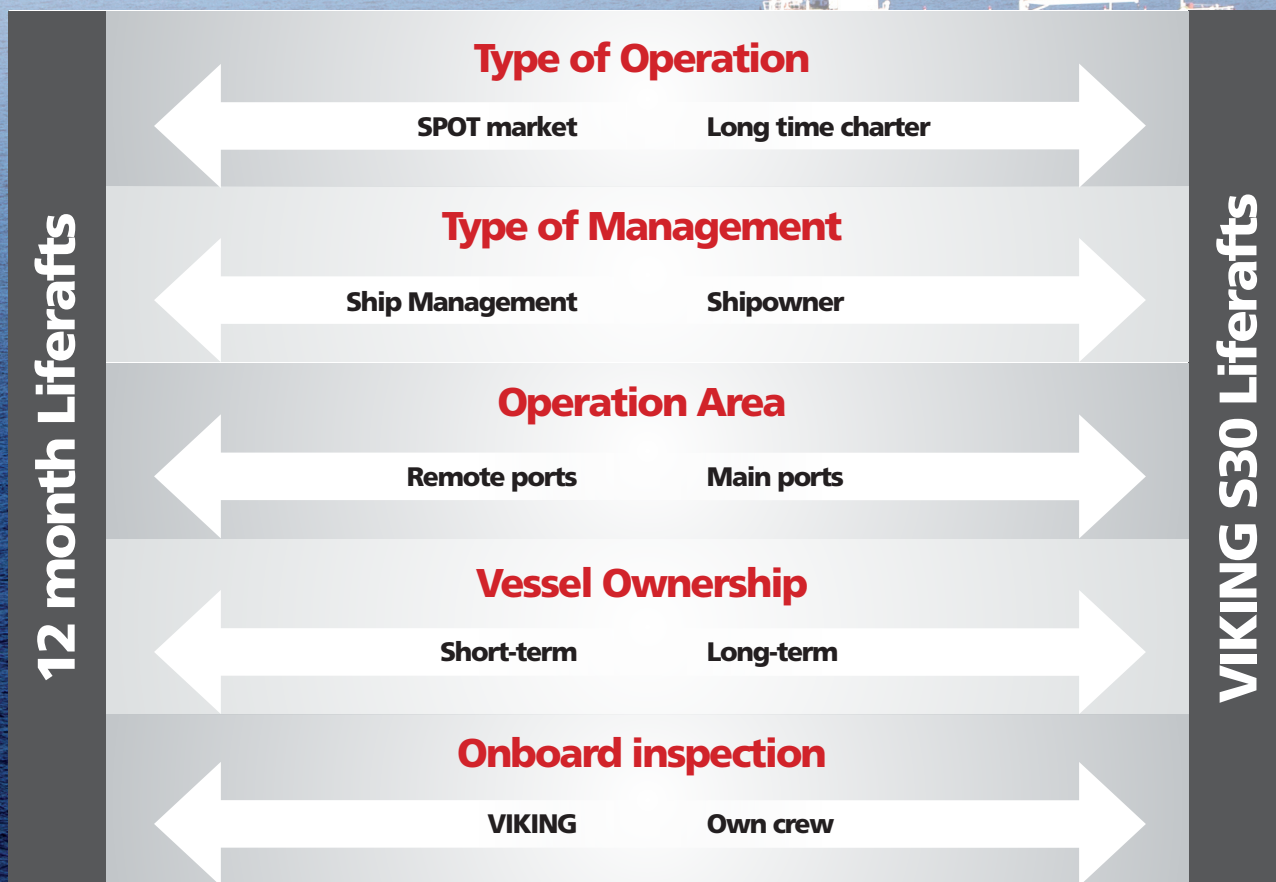
According to SOLAS III / 20.8.1.1 it is possible to get service extensions on standard liferafts (up to 5 months).

This does not apply to extended service interval liferafts, for which there is no possibility of extending the interval.

For vessels requiring ATEX approved products

VIKING liferafts with extended service intervals are packed in an alu bag with a test panel and battery inside the container. The test panel is used for the onboard inspection every 12 months. Unlike other products on the market, VIKING's testing tool is not electrical and does not need a computer or electrical outlet. A special "ATEX approved" tool is not necessary to conduct the onboard inspections on VIKING liferafts.

In fact, liferafts cannot be ATEX approved because the SOLAS required liferaft equipment includes components that are not ATEX approved, such as lights with batteries and pyrotechnics. Due to the SOLAS requirements, there is currently no brand of liferaft on the market with an ATEX approval.



Are liferafts with extended service intervals **right for your fleet?**

Shipowners are always keen to cut costs. But not if it means added risk or more administrative hassles. That's why a decision to move to this type of liferaft has to be carefully considered.

A VIKING S30 liferaft is best suited to vessels that:

- Only need service in key ports
- Make predictable port calls
- Don't expect to change ownership and/or flag state
- Won't require service extensions

So they are a possibility for:

- Long-term charters and liners
- Container vessels calling main ports
- Shipowners that don't change flag states often for any of their vessels
- Ferries (with flag state approval)

But may not be the best choice for:

- Short-term charters (spot market) or liners
- Container vessels that call in both main and remote ports
- Ship management companies



VIKING S30



Rethink your safety with us

For shipowners and operators who want compliant, streamlined, and reduced-risk onboard safety, VIKING is the only safety equipment and servicing provider that provides all the elements of a future-proof strategy.

VIKING Shipowner Agreements offer uniquely customizable concepts that incorporate safety products, global servicing, single-source management, and financing in a variety of fixed price structures.

You can even mix and match liferaft types and service options to suit your fleet's exact needs.

	Fixed Price Service	Fixed Price Exchange	Managed Service at day-to-day prices
Standard liferafts	✓	✓	✓
VIKING S30 liferafts	✓	✓	✓
A combination of standard and VIKING S30 liferafts	✓	✓	✓

VIKING LIFE-SAVING EQUIPMENT

Protecting people and business

Saedding Ringvej 13, DK-6710 Esbjerg V, Denmark
Tel +45 76 11 81 00, VIKING@VIKING-life.com

WWW.VIKING-LIFE.COM